



Public versus Private:

A comparative study of governance in higher education

Prepared for:
EDHE 510 Governance in Higher Education
Spring 2007, Drexel University
Chad Morris and Alan Phillips



Agenda

- **University of Delaware**
 - Historical Background and Highlights
 - Governance Overview
- **Saint Joseph's University**
 - Historical Background and Highlights
 - Governance Overview
- **Comparative Study**



University of Delaware: Historical background and highlights

- Began as a small Presbyterian academy in 1743.
- First chartered by the state as a college in 1833.
- Now identifies as state-assisted & privately governed.
- Recognized as the state “flagship” institution.
- Also Sea Grant, Urban Grant and Space Grant Institution
- Carnegie Class: Doctoral/Research Extensive.
- Seven academic colleges
 - Agriculture and Natural Resources
 - Arts and Sciences
 - Business and Economics
 - Engineering
 - Health Sciences
 - Human Services, Education and Public Policy
 - Marine and Earth Studies

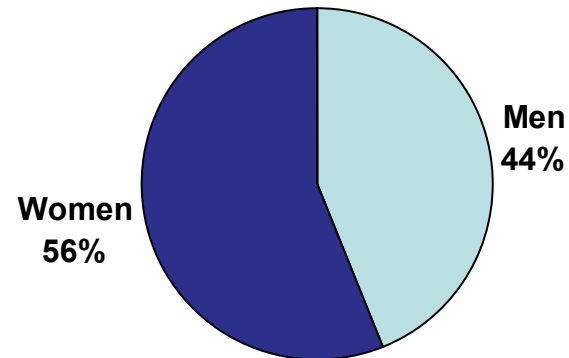




University of Delaware: Historical background and highlights

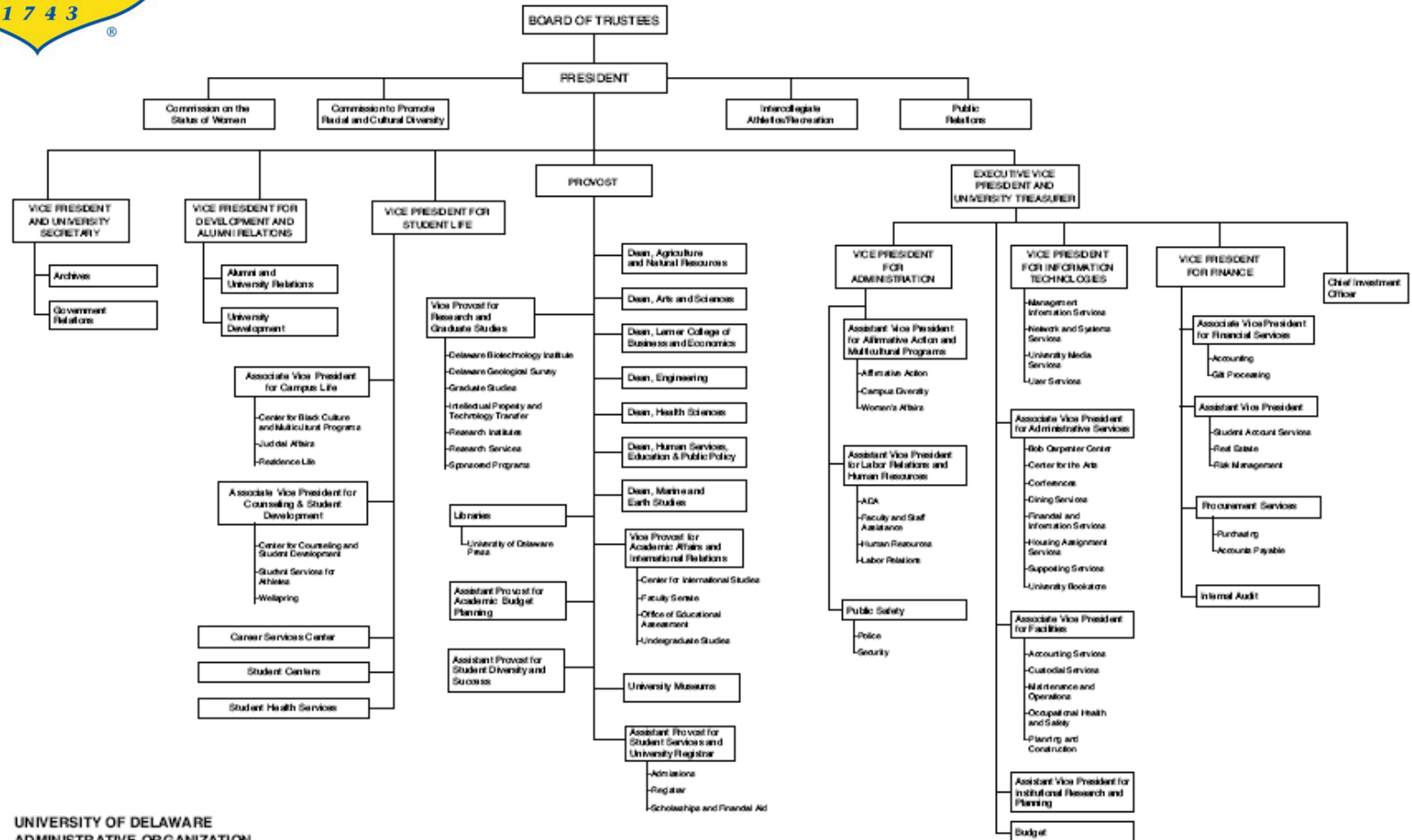
2005-2006 Statistics

- **Enrollment: 20,982**
- **Number of Programs: 246**
- **Undergraduate Tuition: \$7,318/\$17,474**
- **Graduate Tuition: \$7,318/\$17,474**
- **Number of Employees: 3,965**
- **Number of Faculty: 1,077 (FT)**
- **Operating Budget: \$585.3 million**
- **Endowment: \$1.6 billion (Jan 2006)**





University of Delaware: Governance Overview





University of Delaware:

Governance overview

Board of Trustees

“Shall have the entire control and management of the affairs of the University.”

Board Powers:

- Manages all fiscal affairs
- Set student charges
- Set employee compensation
- Issue and set terms for bonds
- Set contract and purchasing rule
- Plan and manage facilities

projects

Board Composition:

32 members

- 23 men, 9 women
- 4 ex-officio
- 5 officers
- 1 Special Counselor

6-year maximum terms

State Representation:

- Governor
- State Board of Education President
- Master of State Grange
- Governor appoints 8 members

Standing Committees:

Architecture, Audit, Investment

Special Committees:

Compensation, Nominating

Visiting Committees:

Academic Affairs, Finance, Grounds and Buildings, Honorary Degrees & Awards, Public Affairs and Advancement, Student Life and Athletics



University of Delaware: Governance Overview

University Administrative Officers

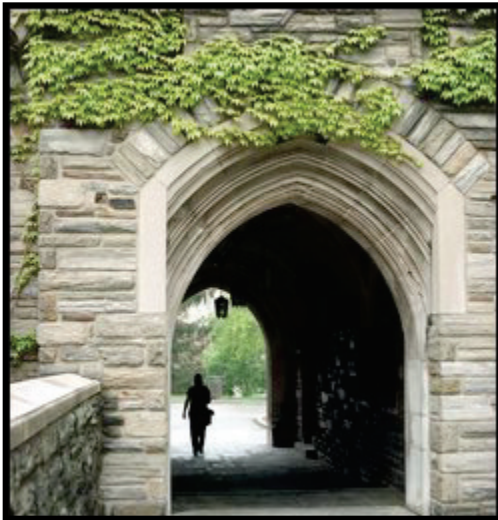
- **President**
- **Provost**
- **Executive Vice-President & University Treasurer**
- **Vice President for Administration**
- **Vice President for Development & Alumni Relations**
- **Vice President for Information Technologies**
- **Vice President and University Secretary**





St. Joseph's University:

Historical background and highlights



- **Founded on September 15, 1851 in Philadelphia**
- **Originally named St. Joseph's College**
- **Private Roman Catholic institution**
- **Founded by the Society of Jesus (Jesuit Order)**
- **Moved to its current location in 1927**
- **Admitted women to all programs in 1970**
- **Became St. Joseph's University in 1978**
- **Currently consists of:**
 - **College of Arts and Sciences**
 - **Erivan K. Haub School of Business**

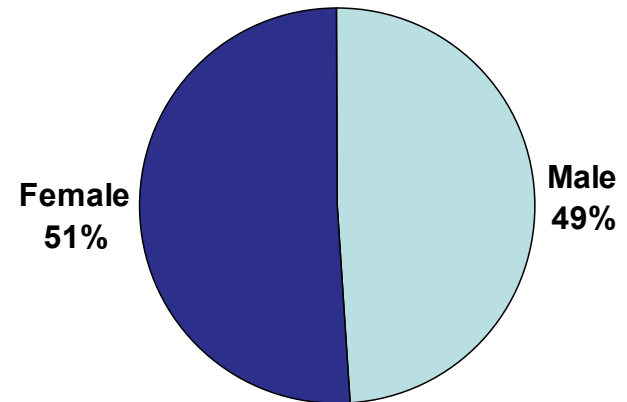


St. Joseph's University:

Historical background and highlights

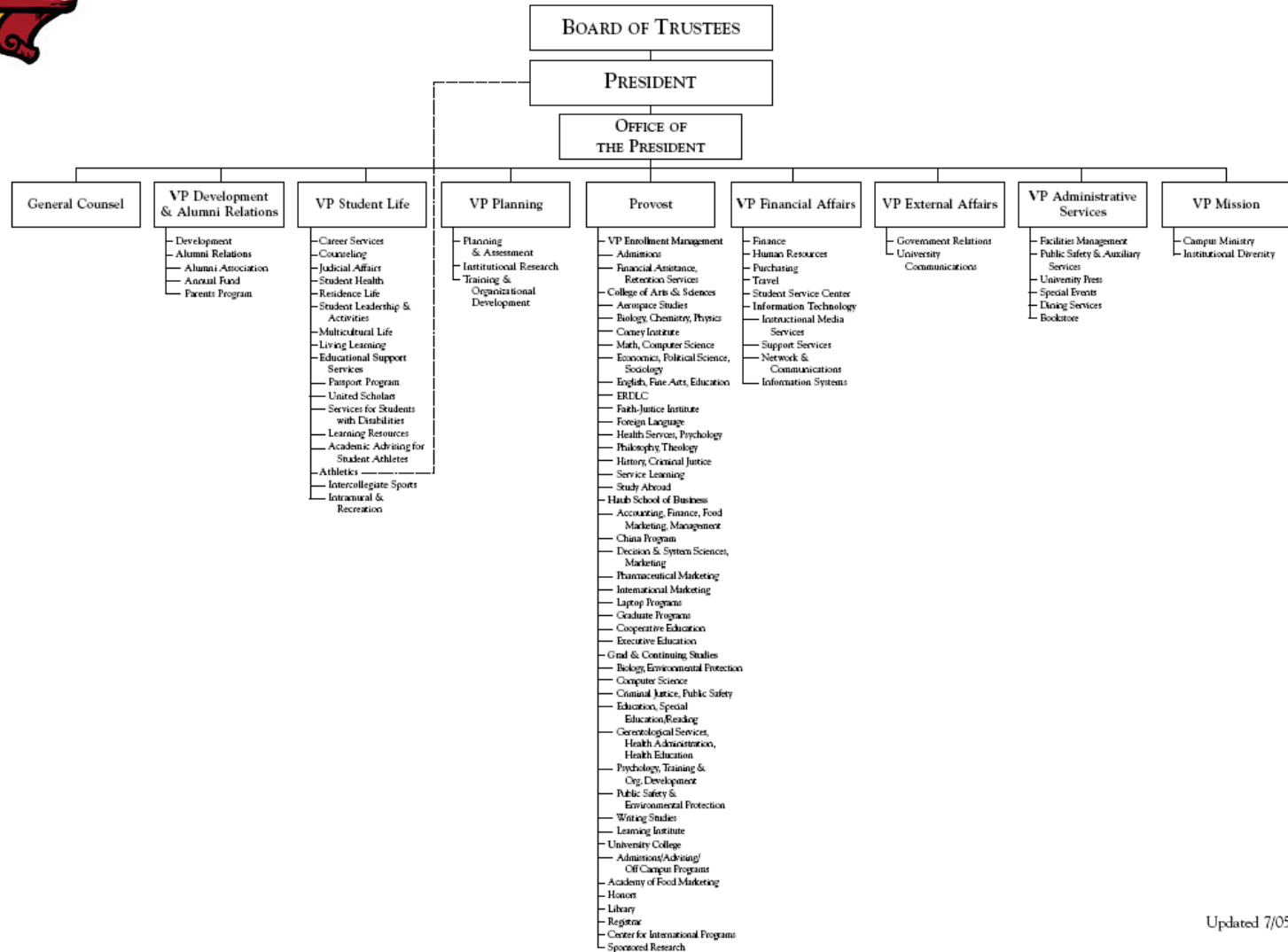
2005-2006 Statistics

- **Enrollment: 7700**
- **Number of Programs: 127**
- **Undergraduate Tuition: \$27,320**
- **Graduate Tuition: \$667 - \$717 per credit**
- **Number of Employees: 1324**
- **Number of Faculty: 652**
- **Operating Budget: \$185 million**
- **2005 Endowment: \$97 million**





St. Joseph's University: Governance Overview





St. Joseph's University: Governance Overview

Board of Trustees

- “To direct and manage the business and affairs of the University”
- 18 specific powers
- 32 members
 - 30 men and 2 women
 - 10 Jesuits and 22 lay folk
- Staggered three year terms
- Most work is done in standing committees
- Responsible for the oversight and review of the President

University Council

- Main University governance body
- Includes faculty, student and staff representation
- Makes decisions on mandates concerning curriculum and University policies
- Mandates are considered within subcommittees whose recommendations are voted on by the entire Council
- Successful mandates are passed to the President



St. Joseph's University: Governance Overview

The Administration

- President
- Provost
- Seven Vice Presidents
 - Administrative Services
 - Development and Alumni Relations
 - External Affairs
 - Financial Affairs
 - Mission
 - Planning
 - Student Life
- General Council

Other Important Boards and Committees

- College Councils
- Faculty Senate
- University Student Senate
- Institutional Planning Committee
- Budget Advisory Committee
- Academic Advisory Board
- President's Cabinet
- Academic Cabinet
- Administrative Staff Council



Comparative Study: Differences and similarities in governance

Other Notable Differences

- Egalitarian vs. authoritarian
- University Council
- College Councils
- Autonomy of component colleges and schools
- Religious representation vs. state representation
 - Governor
 - Jesuit Order



Comparative Study: Differences and similarities in governance



Similarities

- Board of Trustees top governance level
- Board size
- Some membership components
- President reports to Board of Trustees
- Existence of president's cabinet
- Provost over academic units
- Vice presidents over administrative units
- Existence of peripheral councils



References

- Association of Jesuit Colleges and Universities. (n.d.). *Jesuit Institutions*. Retrieved May 8, 2007 from <http://www.ajcunet.edu/tier.aspx?bid=54>
- The Carnegie Foundation for the Advancement of Teaching. (2006). *Saint Josephs University*. Retrieved May 7, 2007 from <http://www.carnegiefoundation.org/classifications/sub.asp?key=748&subkey=16080&start=782>
- The Carnegie Foundation for the Advancement of Teaching. (2006). *University of Delaware* Retrieved May 13, 2007 from <http://www.carnegiefoundation.org/classifications/sub.asp?key=748&subkey=13787&start=782>
- Contosta, D. (2000). *Saint Joseph's: Philadelphia's Jesuit University – 150 Years*. Philadelphia, PA: St. Joseph's University Press.
- Hoffecker, Carol. (n.d.). *The Story of the Rev. Dr. Francis Alison*. Retrieved May 7, 2006 from <http://www.udel.edu/PR/CampaignUD/Pages/page2b.html>
- Institutional Research. St. Joseph's University. (2006). *University Fact Book Fall 2006* [Electronic version]. Retrieved May 7, 2007 from <http://www.sju.edu/ir/FactBook2005-2006.htm>
- Institutional Research. University of Delaware. (2006) *Facts and Figures* [Electronic version]. Retrieved May 7, 2007 from <http://www.udel.edu/IR/fnf/index.html>
- Middle States Commission on Higher Education. (2007). *Institutional Directory: St. Joseph's University*. Retrieved May 8, 2007 from http://www.msche.org/institutions_view.asp?idinstitution=421
- Office of the Provost. University of Delaware. (1996). *The University Charter (Revised 1989)* [Electronic version]. Preface. Retrieved May 10, 2007 from <http://www.udel.edu/provost/fachb/udcharter/index.html>
- Office of the Provost. University of Delaware. (1996). *Bylaws of the Board of Trustees of the University of Delaware (Revised 1989, 1992, 1997, 1999)*. [Electronic version]. Chapter 1: Pertaining to the Board of Trustees (Revised May 1992. May 1999). Retrieved May 9, 2007 from <http://www.udel.edu/provost/fachb/bothylaws/bylaws-chap1.html>
- St. Joseph's University. (n.d.). *St. Joseph's University Faculty Profile Fall 2006*. Retrieved May 7, 2007 from <http://www.sju.edu/ir/documents/2006-07FacultyProfile12506revised.pdf>

References (cont'd)

- St. Joseph's University. (2003, November 17). *Middle States Commission on Higher Education Re-Accreditation Self-Study* [Draft] [Electronic version]. Retrieved May 7, 2007 from <http://www.sju.edu/admin/middlestates/Middle%20States/2003%20MS%20REPORT%20Draft%20November%2017.pdf>
- St. Joseph's University. (2006a). *Facts and Figures*. Retrieved May 7, 2007 from http://www.sju.edu/sju/facts_figures.html
- St. Joseph's University. (2006b). *Mission Statement*. Retrieved May 7, 2007 from http://www.sju.edu/sju/mission_statement.html
- Thomas, Neil. (2006). *Kiplinger's Selects UD Among 06 Best Values*. UD Daily. (January 10, 2006 ed.). Retrieved May 13, 2007 from <http://www.udel.edu/PR/UDaily/2006/jan/kiplinger011006.html>
- University Archives, University of Delaware. (n.d.). *Significant Dates in the University's History*. Retrieved May 7, 2007 from <http://www.udel.edu/Archives/Archives/sigdates.html>